

Clyde Peatlands

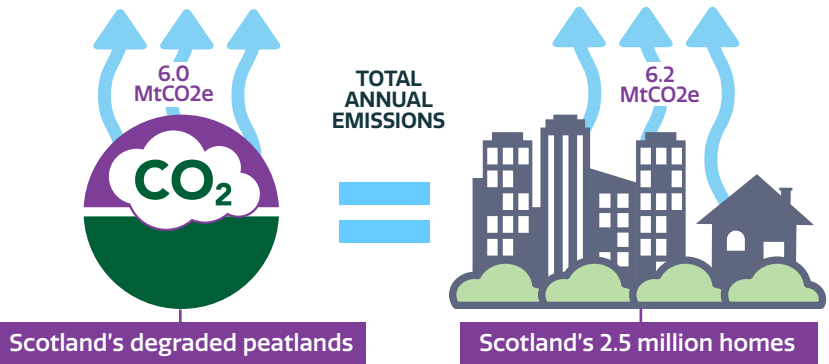
**Addressing the
climate and ecological crises**

Why Peatlands?

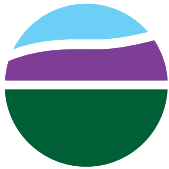
Peatland restoration is a nature-based solution to the climate and ecological crises. Healthy bogs can lock up and store large amounts of carbon however, if degraded, may instead emit more carbon than they remove.

Healthy, functioning peatlands can help mitigate the anticipated impacts of climate change such as increased rainfall events by storing and slowly releasing water back into the river network. Healthy peatlands are also home to an array of birds, plants, fungi, invertebrates and micro-organisms making them an incredibly unique and biodiverse habitat.

A fifth of Scotland is covered in peat but 80% of that is currently degraded and emitting carbon.



Reference: Sources of Scottish Greenhouse Gas Emissions, 2018. Values in MtCO2e – Scottish Government 2020



Clyde Peatlands

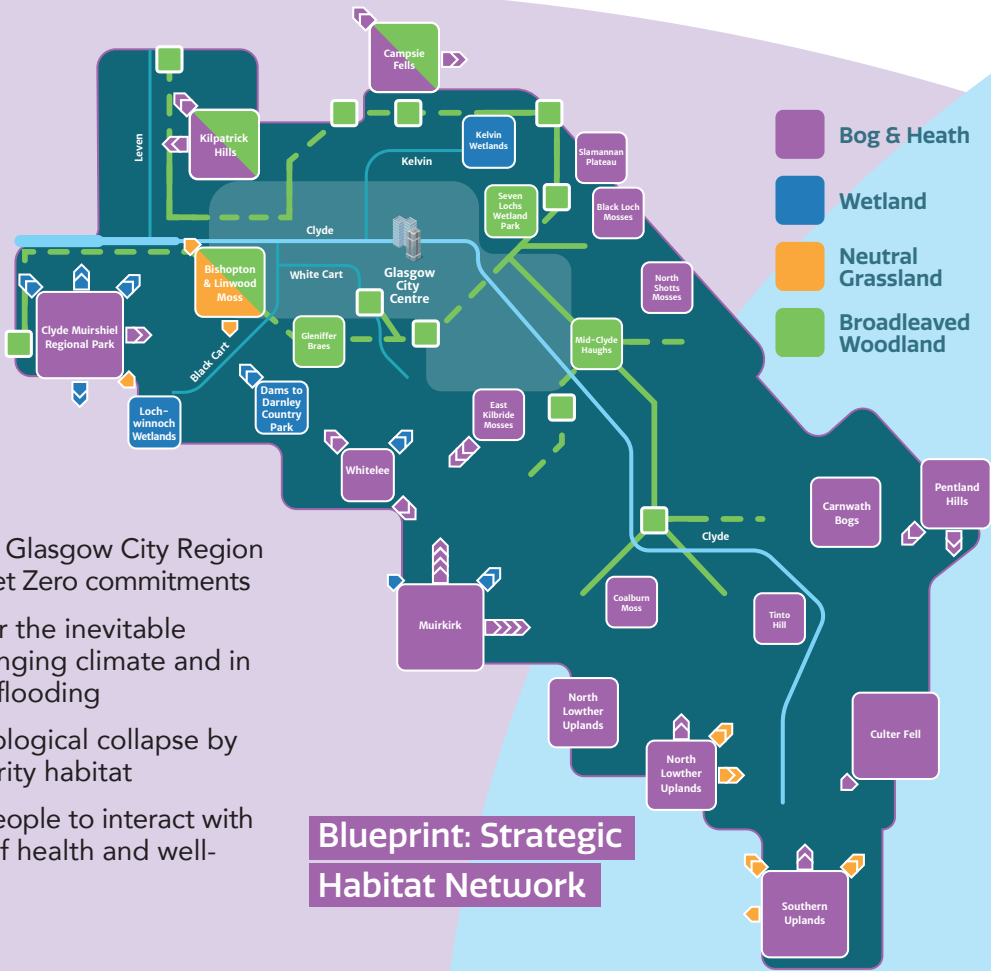
The Green Network has developed Clyde Peatlands to directly address the opportunities for peatland restoration across **Glasgow City Region** with support and funding from NatureScot, through the Peatland ACTION Fund.

Benefits

Our Blueprint was developed to guide delivery of the regional Green Network and is based on Strategic Habitat and Access Networks.

Clyde Peatlands will deliver the bog & heath component of the Strategic Habitat Network.

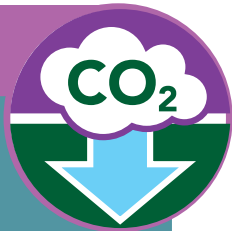
- It will:
- > Provide a unique opportunity for Glasgow City Region to deliver on its plans to meet Net Zero commitments
 - > Help prepare the City Region for the inevitable consequences of an already changing climate and in particular increased rainfall and flooding
 - > Contribute to the reversal of ecological collapse by restoring a Scottish and UK priority habitat
 - > Provide local opportunities for people to interact with nature bringing with it a range of health and well-being benefits.



Carbon



Large scale bog restoration to reduce emissions and lock up carbon, particularly in the upland areas around Glasgow City Region.



Connectivity



Restoration of a rich and diverse wildlife habitat and creation of a permeable landscape that allows species to move freely through and between peatland habitats.



Community



Creating local opportunities for people to understand the importance of bogs and to engage them in practical restoration activities.



Case Studies

Whitelee Wind Farm, East Kilbride

Whitelee is the UK's largest onshore wind farm. As part of the Whitelee development the site owners, ScottishPower Renewables, committed to restoring 900 hectares of previously forested blanket bog and 1700 hectares of drained blanket bog. Restoration techniques included ground smoothing the deforested areas and wave damming (blocking) drained areas to encourage peatland species to recolonise. Over half of Whitelee's peatlands are on the road to restoration with the remainder planned for the next 5 years.



Lenzie Moss, East Dunbartonshire

Lenzie Moss is a lowland raised bog that was modified and degraded through historic peat extraction. Over the last 20 years a partnership between East Dunbartonshire Council and the Friends of Lenzie Moss have worked together to improve the condition of the bog. Restoration included tree removal and ditch blocking. Drying out of the bog has been reduced and wetter areas created providing vital habitats for wildlife and key bog building plants such as sphagnum moss. This, in addition to access improvements, has transformed the site into a healthier peatland landscape and a much valued and well-used local outdoor space. This project is supported by NatureScot, through the Peatland ACTION Fund.



Can you help us deliver?

Peatland restoration represents a fantastic opportunity for Glasgow City Region to contribute to net zero targets while helping address the impacts of increased rainfall and assisting with nature's recovery. Clyde Peatlands can only succeed if landowners and land managers help deliver peatland restoration.

We would like to speak with you if:

- > You own or manage peatlands or land with peat soils
- > Your land is near one of our habitat connectivity target areas

Contact Us

enquiries@gcvgreennetwork.gov.uk

Why you might be interested:

- > Free advice and consultation
- > Up to 100% funding for feasibility and capital works
- > The potential to generate income from Peatland Code credits
- > Water flow regulation to help reduce flooding or for hydro schemes
- > To restore a national priority habitat for wildlife.



Clyde Peatlands is a Green Network Blueprint delivery project hosted by South Lanarkshire Council with support and funding from NatureScot, through the Peatland ACTION Fund.