



**Clyde Climate Forest**

CANOPY • CONNECTIVITY • CARBON

# The Clyde Climate Forest





## The right trees, in the right places

There is a growing interest in the role of trees, woodlands and forests as a response to the Climate and Ecological Emergencies. Politicians and many organisations have been quick to support substantial targets for tree planting as part of their commitment to reduce climate damaging emissions and to assist in a recovery for nature.

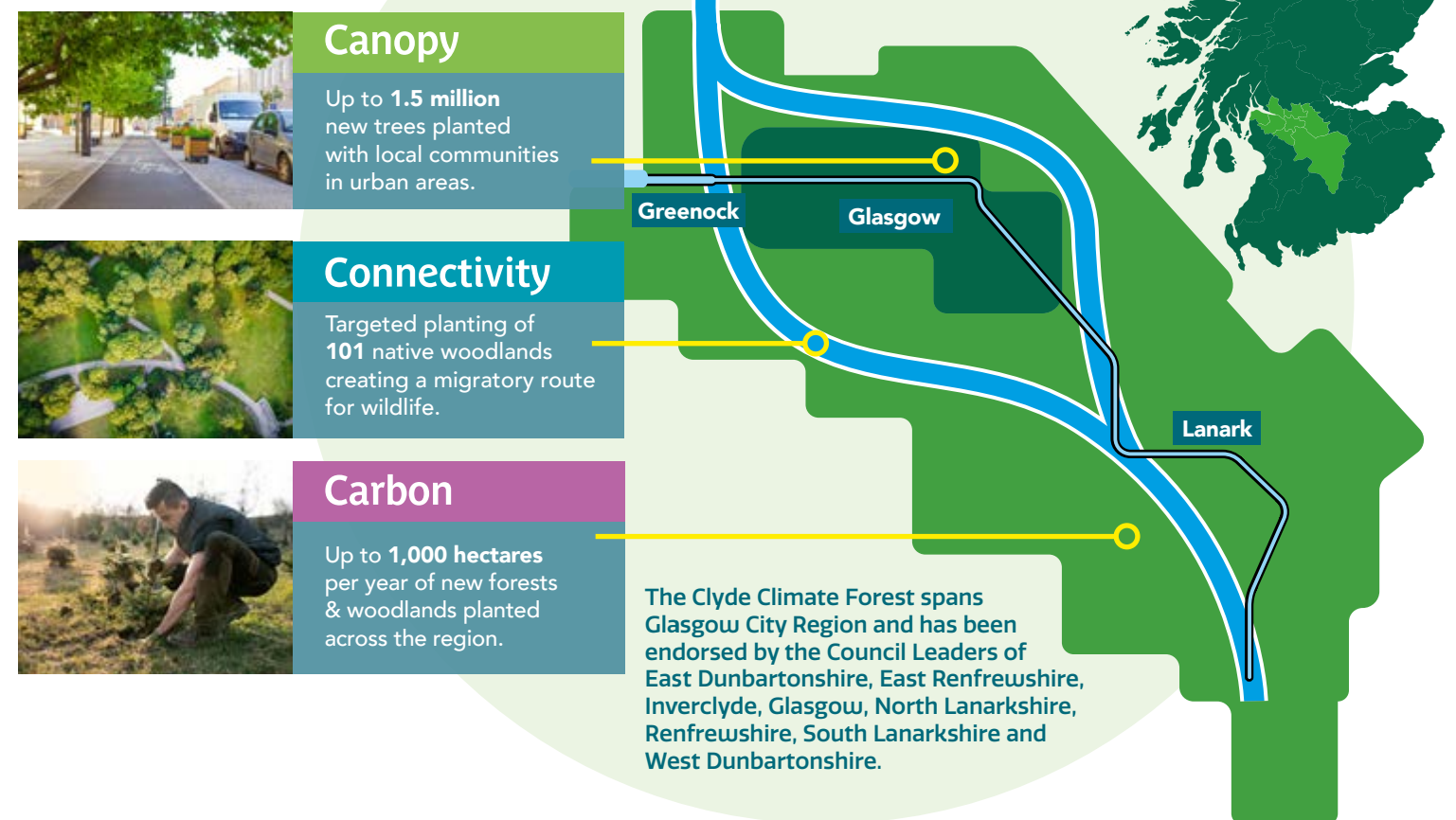
The Clyde Climate Forest (CCF) builds on the current enthusiasm for tree planting and will channel that interest into worthwhile and well-considered tree planting projects that deliver a broad range of climate and ecological benefits to Glasgow City Region.

### The Clyde Climate Forest's three "C"s:



Around **18 million trees** will be planted in both urban and rural parts of Glasgow City Region over the next decade.

## Where will the CCF be?



Why plant trees?		The current situation		By 2032 the Clyde Climate Forest aims to:	
Canopy	<b>URBAN TREES</b> provide cooling in heatwaves and surface water management for cloud-bursts, whilst also providing some carbon storage and wildlife habitat. Even a moderate increase in canopy cover can aid adaptation to the adverse effects of climate change.	<b>16.6%</b> THE ESTIMATED TREE CANOPY COVER IN URBAN GLASGOW		INCREASE THE AVERAGE TREE CANOPY COVER IN URBAN GLASGOW TO:	<b>20%</b> New urban tree planting in neighbourhoods with low levels of canopy cover, particularly in areas of deprivation and at risk from the impacts of climate change.
Connectivity	<b>NATIVE WOODLANDS</b> provide essential ecosystem services and wildlife habitat. Creating connected woodland networks will help to reverse the habitat fragmentation caused by decades of urban development, protect biodiversity, and offer migratory routes as the climate changes.	<b>119ha</b> THE AVERAGE BROADLEAVED WOODLAND NETWORK AREA IN GLASGOW CITY REGION		INCREASE THE AVERAGE BROADLEAVED WOODLAND NETWORK AREA TO 142 HA – AN INCREASE OF:	<b>20%</b> New native woodland planting in places which connect existing woodland networks and provide a northerly migration route for woodland wildlife as the climate changes.
Carbon	<b>NEW FORESTS</b> are effective carbon sinks and can provide: natural flood management; construction timber to substitute for high emission steel and concrete; and wildlife habitats. Potentially over 9,000 hectares in the region could become new forests including on vacant land.	<b>17%</b> THE EXTENT OF LAND COVERED IN FORESTS OR WOODLAND IN GLASGOW CITY REGION		INCREASE FOREST AND WOODLAND COVER IN GLASGOW CITY REGION TO:	<b>20%</b> New forest and woodland plantings where they will deliver: good rates of carbon sequestration; help reduce downstream flooding; and provide for nature.



**"New community woodlands, trees and forests will bring multiple benefits to our local communities as well as wildlife. The pandemic has brought into focus like never before the value of local spaces as places to exercise, de-stress and engage with nature and this project can help to deliver the Green Recovery. The economic, ecological and social benefits will be extensive"**

### Councillor Aitken

Chair of Glasgow City Region Cabinet  
and Leader of Glasgow City Council



## How can I get involved?

You can help the Clyde Climate Forest grow:

### Help plant trees

**Help us identify opportunities for tree planting** - If you are enthusiastic about trees and live in one of our target areas for tree planting, you can help us by finding sites where trees can be planted.

These might be:

- > replacing lost street trees;
- > street side grass areas that could accommodate trees;
- > corners of a playing field or a park where a small wood might fit in.

**Come to a tree planting event with your family and friends** - We're keen to involve local people in planting trees in neighbourhoods with low levels of tree cover, especially young people as they will gain most from seeing these trees grow and thrive in years to come.

### Look after your local trees

**Help us to protect and nurture trees in your local neighbourhood** - We want the trees planted as part of the Clyde Climate Forest to reach their potential and provide the many benefits to people and wildlife which only mature trees can deliver. Sadly many urban trees have a short lifespan. You can help:

- > look after the new trees in your neighbourhood;
- > keep the base of the trees free of grass and weeds;
- > provide water to young trees in periods of drought - a bucket of water can make all the difference.



### Raise funds

**Help us to find the funding required for new trees and their care** - We need to buy trees for neighbourhoods with low tree cover and pay for their aftercare. You can:

- > organise a fundraising event;
- > get a local company to sponsor a tree planting scheme;
- > donate the cost of a tree, or several trees.

Go to [www.mypark.scot/ccf](http://www.mypark.scot/ccf) to donate.

### Contact

- > [community@clydeclimateforest.co.uk](mailto:community@clydeclimateforest.co.uk)

### Community Planting



#### Faifley Knowes Park, Clydebank

- > 600 trees planted by TCV through OVO corporate sponsorship
- > Multiple benefits for local wildlife and people

### Tiny Forest



#### Seven Lochs Tiny Forest

- > A dense mix of 600 native trees planted as the first of many 'tiny forests'
- > Part of Scotland's largest urban nature park



## Organisation and business involvement

We are keen to involve organisations and businesses, particularly those based within Glasgow City Region, in helping deliver the Clyde Climate Forest. There are several ways in which businesses and other organisations may wish to help:

### Support community tree planting

**As part of Corporate Social Responsibility commitments** - Funding is required for various types of small urban tree planting projects that are ineligible for forestry grants. Many of these projects could provide the opportunity for a business to help build climate resilience in local communities. Organisations based in Glasgow City Region may also wish to encourage staff to participate in a corporate tree planting activity.

### Achieve 'Net Zero'

**Through purchase of local carbon credits** - Purchasing carbon credits from landowners in our region helps to encourage more local landowners to plant more woodlands bringing about wider benefits to those who live and work here. A local investment can be verified, more easily visited, and contribute towards creating a stronger regional economy as well as regional 'Net Zero' targets.

### CCF Charter:

The CCF Charter is for organisations who wish to promote their support for the Clyde Climate Forest and use the CCF logo.

- > The Charter requires organisations to have a Climate Change Strategy which includes carbon sequestration through tree planting as part of a wider Net Zero plan to reduce greenhouse gas emissions and reduce fossil fuel consumption

### Contact

> [business@clydeclimateforest.co.uk](mailto:business@clydeclimateforest.co.uk)

## Opportunities for landowners / managers

The Clyde Climate Forest can't succeed without land upon which to plant trees, woods and forests. We need landowners and land managers to consider the opportunities for tree planting as part of the Clyde Climate Forest.

### We're keen to speak to you if you own or manage land:

- > in one of our target urban neighbourhoods;
- > near one of our woodland connection sites;
- > which could generate woodland carbon credits.

Check out where our targets are on our website.  
[www.clydeclimateforest.co.uk](http://www.clydeclimateforest.co.uk)

### Why you might be interested:

- > to grow timber for sale or your own use;
- > to grow carbon credits for your own use, or to sell on and generate an income;
- > to provide shelter to crops or livestock;
- > to provide wildlife habitats and landscape interest;
- > to reduce areas of mown grass in parks and greenspaces.

### What's on offer:

We can provide you with information and advice on:

- > woodland planting grants that are generally available;
- > financial support mechanisms that are specifically available for Clyde Climate Forest projects;
- > free Farm Woodland Assessments (for farmers);
- > free Woodland Potential Assessments (for local authorities and other organisations).

### Contact

> [land@clydeclimateforest.co.uk](mailto:land@clydeclimateforest.co.uk)

### Private Sector



#### McLaughlin & Harvey

- > McLaughlin & Harvey signed off their new Carbon Strategy with a commitment to Net Zero by 2030
- > To achieve their Net Zero plans, McLaughlin & Harvey will be investing in the Clyde Climate Forest

### Farming Sector



#### Hillhead Farm, Torrance

- > Planting trees across 27ha with Forestry Grant Scheme support on unproductive land
- > Diversification to secure the family business for generations
- > Reducing carbon footprint and supporting ecosystems

### Utility Sector



#### Scottish Water

- > Plans to support biodiversity and Net Zero emissions through woodland expansion
- > Has identified sites to support development of the Clyde Climate Forest and will assess all landholdings for the potential to improve sequestration

### Public Sector



#### Glasgow City Council

- > 40,000 trees being planted helping the council toward Net Zero in association with Green Action Trust
- > A new woodland habitat network linking Coulter's Wood, Cathkin Braes and Cart & Kittoch woodland (a Site of Special Scientific Interest)



**Clyde Climate Forest**

CANOPY • CONNECTIVITY • CARBON

**The Clyde Climate Forest is  
being delivered with the help of:**



**Green  
Action  
Trust**



**GLASGOW  
CITY REGION**



**TREES  
FOR  
CITIES**



**Scottish  
Forestry**  
Coilltearachd  
na h-Alba



**WOODLAND  
TRUST SCOTLAND**



**Clyde Climate Forest**

CANOPY • CONNECTIVITY • CARBON

### **Contact Us**

Clyde Climate Forest  
Floor 2, Room 29, 40 John Street,  
City Chambers East, Glasgow G1 1JL



@ClydeClimateFor

[www.clydeclimateforest.co.uk](http://www.clydeclimateforest.co.uk)



**gcv green network**

**The Clyde Climate Forest is  
a Green Network Blueprint  
delivery project.**