



# Delivering the Green Network in Ferguslie Park

## LOCATION

Ferguslie Park lies to the west of Paisley town centre and has a population of 4,388 (2001 census). The area is geographically isolated by three railway lines, which represent significant physical barriers to pedestrian and cycle routes.

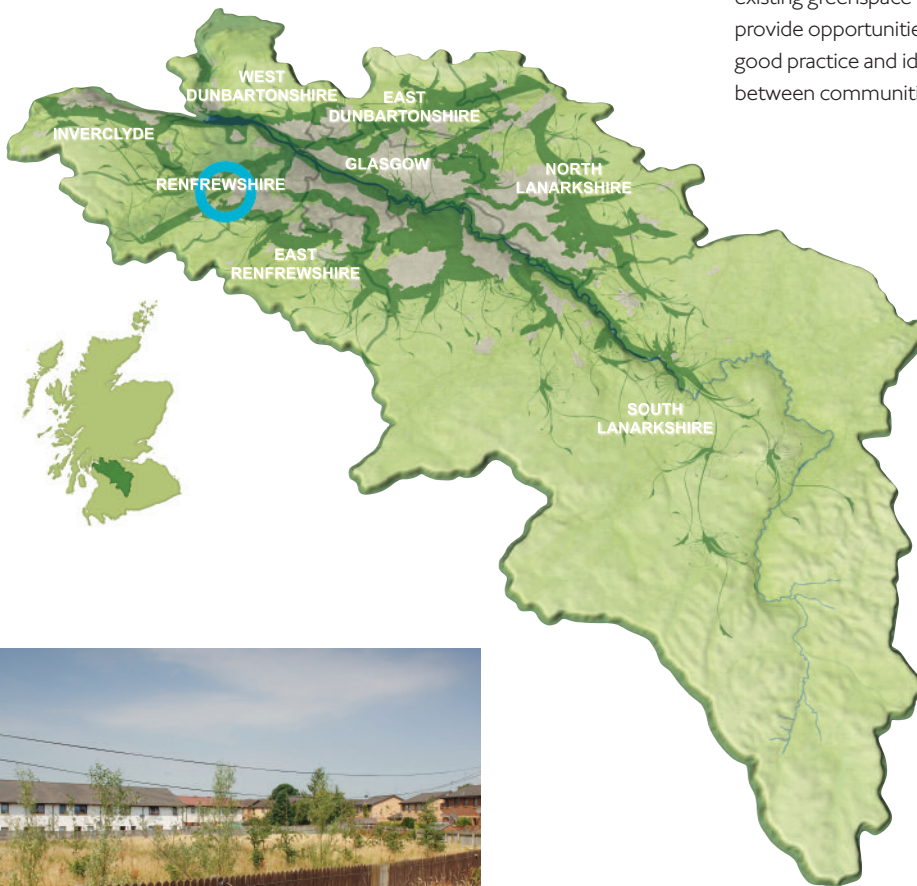
## THE GREEN NETWORK

By involving both local communities and stakeholders with the development of an integrated Green Network in and beyond Ferguslie Park, a greater sense of inclusion will be achieved as well as opportunities for enterprise development, health improvement and biodiversity enhancement. Maintenance and development of new and existing greenspace will also provide opportunities to share good practice and ideas between communities.

## URBAN RENEWAL

Ferguslie Park was once a designated Social Inclusion Partnership (SIP) area with high levels of unemployment and deprivation. The area has since benefited from a range of regeneration initiatives that have delivered extensive change by improving housing provision, community facilities and the local environment. There are, however, a number of environmental issues and a sense of exclusion and deprivation that still need to be addressed. The entry points to the estate and the high proportion of vacant land, with poor biodiversity and lack of provision for play, need improvement to create a more positive image for the area. The main park has great potential, but currently appears run down and suffers high levels of vandalism.

© Crown Copyright. All rights reserved 100023417 2008





# Aspirations

## COMMUNITY EMPOWERMENT & OWNERSHIP

This is an integral part of the process of developing the Green Network. It will ensure the local community is kept well informed and given the opportunity to participate in the development process as well as the design and implementation of practical projects.

## LOCAL NETWORKS

There is potential to develop a good system of cycle and walking routes around Ferguslie Park. These would provide recreational routes for residents and strengthen links between the community and surrounding areas. The routes would also provide safe access through the area to people from outside, helping to overcome negative perceptions of Ferguslie Park.

## TANNAHILL GARDEN CENTRE

At the local community centre the Tannahill Garden Centre is being developed as an innovative light and sound garden. Much of the design and related works will be done by local volunteers, who will learn new skills during the process. This will not only build capacity within the community but will also help create a stronger sense of inclusion.

## NORTH CANDREN

An opportunity exists in North Candren to transform the redundant open space by developing the recreational possibilities, increasing the number of habitats and improving the biodiversity of the area.

## BAROCHAN GREENSPACE

Situated on Ferguslie Park Housing Association land, Barochan Greenspace is being developed as a gardening area for features such as allotments, composting, a plant nursery, an orchard, a centre for gardening skills and a wildlife garden. The area is well protected by fences and gates and has good vehicle access. There has already been a community volunteer "clean up" of the site and some planting of native trees within the space.

## GLENCOATS PARK

Glencoats Park is the prime public open space in Ferguslie Park and has the remnants of a high quality designed landscape, once part of the grounds to Glencoats House. There is potential to reverse the current degradation and to increase the recreational possibilities of the park in partnership with the local community.

## LOCAL GREENSPACE

The design of a local greenspace will be considered strategically, ensuring necessary partnerships are developed and the long term management options are explored.

This approach will produce a well planned and fully integrated Green Network. We are currently working in partnership with Ferguslie Park Housing Association to maintain the engagement of the local community and to assist in the development of greenspace opportunities on sites within their control.

## WIDER LINKAGES

Creation of the Ferguslie Park Green Network will establish significant and extremely valuable access to wider transport links, possible areas of employment and recreational routes. The key focal points of this wider network include Paisley Town Centre, St James' Station, the National Cycle Network (Route 7), the local Core Path Network, Phoenix Business Park, Glasgow Airport, Paisley Moss Nature Reserve and adjacent countryside.

## PARTNERS

GCV Green Network Partnership; Renfrewshire Council; Forestry Commission Scotland; Scottish Government Housing and Regeneration Directorate; and Ferguslie Park Housing Association.



**gcv green network**  
connecting our quality spaces

To get involved with the GCV Green Network in Ferguslie Park call 0141 229 7746

Download the 'Ferguslie Park Green Network Report' or sign up to our e-newsletter at [www.gcvgreennetwork.gov.uk](http://www.gcvgreennetwork.gov.uk) or contact us by email: [enquiries@gcvgreennetwork.gov.uk](mailto:enquiries@gcvgreennetwork.gov.uk)

Printed on recycled paper. FSC certified.